

FM Chain conveyor is designed for horizontal conveying of fine- and coarse grained products.



- » The chain conveyor is suitable for conveying as well fine as coarse grained products.
- » The conveyor is in a totally enclosed design and is manufactured from heavy steel.
- » Drive- and tension sections, as well as the intermediate sections are manufactured in standard lengths.
- » The chain conveyor is supplied with a standard scraper chain. If needed the conveyor can be delivered with special chain types depending on the products to be conveyed.
- » Outlets are available in manual, pneumatic and motor operated executions.
- » As standard, the conveyor bottom is equipped with 10 mm Nonfric wear plate, overflow flap with switch, inspection window in the drive terminal, and motor bracket.
- » The chain conveyor can also be equipped with return rail, aspiration connection, side inlets, and intermediate bottom with shutters for controlling the flow.

Please note that the drive- and tensioning chain wheels are always mounted with spring bushings, and that the conveyor sections are always pre-assembled from the factory.

Conveying capacity up to 450 m³/h.

We supply our chain conveyors in the following executions:

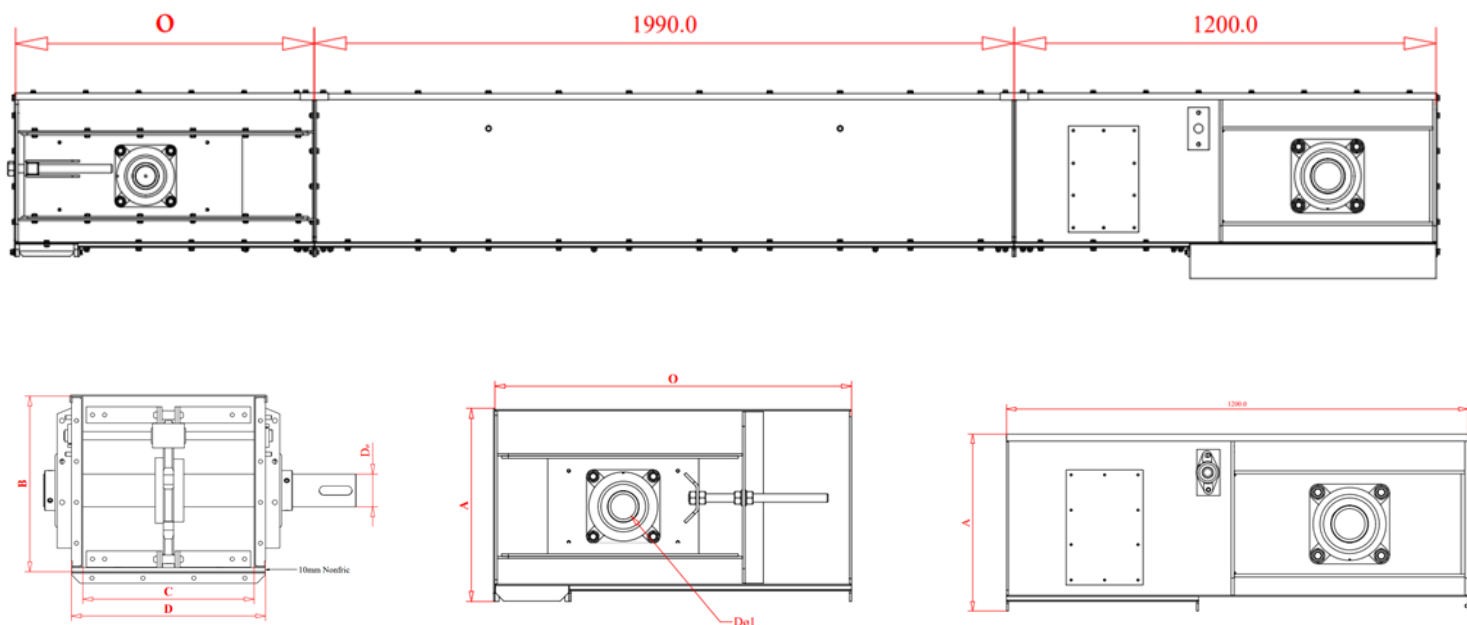
- » Manufactured in St. 37 and painted in RAL 1013 (other colours on request)
- » Manufactured in St. 37 and hot dip galvanised – especially for erecting outside.
- » Manufactured in stainless steel type AISI 304.
- » Manufactured in stainless steel type AISI 316.

TYPE A 40 – A 800

General measurements for FM chain conveyors

Type	A	B	C	D	O	T	D _ø	D _{ø1}	M ³ /H
A-40	331	300	205	261	700	3	50	40	63
A-50	331	300	255	309	700	3	50	40	79
A-70	412	381	255	309	850	3	60	50	108
A-90	412	384	330	384	850	3	60	50	140
A-115	461	430	330	384	850	3	80	60	180
A-150	461	420	420	474	850	3	80	60	228
A-200	640	593	420	508	850	4	100	60	302
A-250	640	593	540	628	850	4	100	60	388
A-300	640	593	600	688	850	4	100	60	432
A-600	960	492	630	760	1500	5	120	100	742
A-800	960	892	840	970	1500	5	160	120/100	989

Shaft adapted to fit bearing Ø100 mm at Non-drive end.



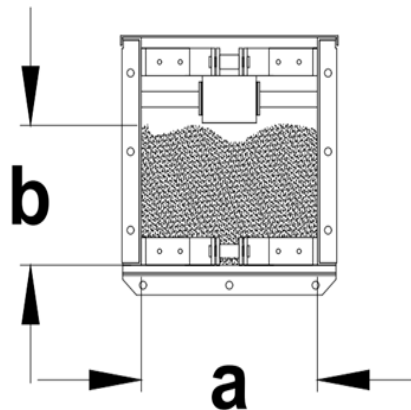
CAPACTIES

Capacity scheme:

The shown capacities and volumes are based on the drawing shown to the right, showing filling the conveyor underneath the return roller.

The capacities are based on horizontal transportation, if the conveyor is erected with inclination, the capacity will drop.

Please consult us for recommendation of maximum inclination.



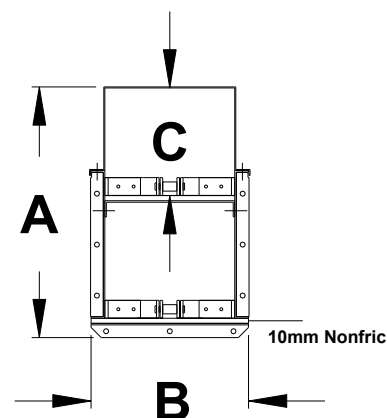
Tekniske data		A-40	A-50	A-70	A-90	A-115	A-150	A-200	A-250	A-300	A-600	A-800
Kædehjul	Delediameter	230,5	230,5	288	288	326,5	326,5	483	483	483	618,19	618,19
	Tandantal	7	7	7	7	8	8	12	12	12	12	12
	Deling	100	100	125	125	125	125	125	125	125	125	125
	Omdr/min	40	40	31,5	31,5	31,5	31,5	20	20	20	15	15
Kædehastighed	M/sek	0,48	0,48	0,47	0,47	0,53	0,53	0,5	0,5	0,5	0,48	0,48
Kapacitet	a	205	255	255	330	330	420	420	540	600	630	840
	b	180	180	250	250	285	285	400	400	400	682	682
	m ³ /h	63	79	108	140	180	228	302	388	432	742	989
	Cap. 0,7 t/h	44	55	75	97	125	160	210	270	302	519	692

Chain conveyor with intermediate bottom:

Measurements showing dimensions for the conveyor with intermediate bottom.

The bottom as well as the intermediate bottom is equipped with 10 mm Nonfric.

	A	B	C
A-40	492	261	211
A-50	492	309	211
A-70	631	309	279
A-90	631	384	279
A-115	782	384	389
A-150	782	474	389
A-200	1090	476	483
A-250	1091	596	483
A-300	1051	688	496
A-600	1593	760	733
A-800	1593	970	-



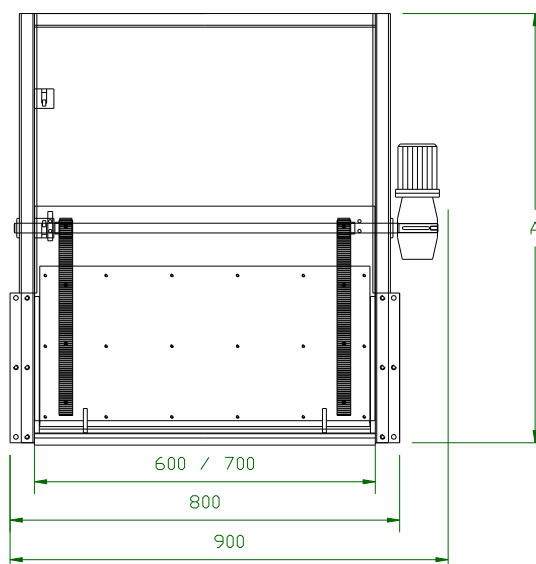
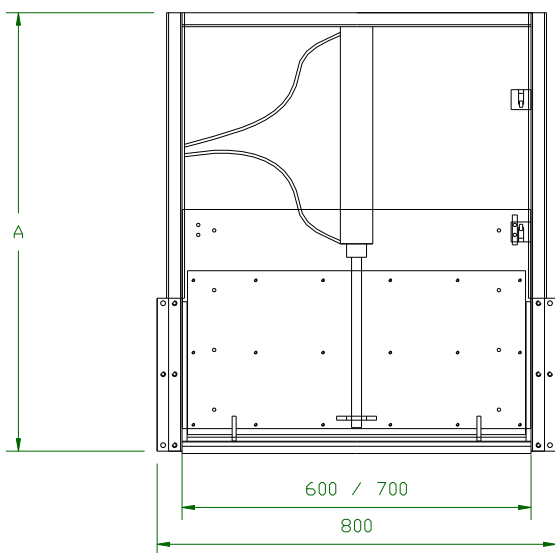
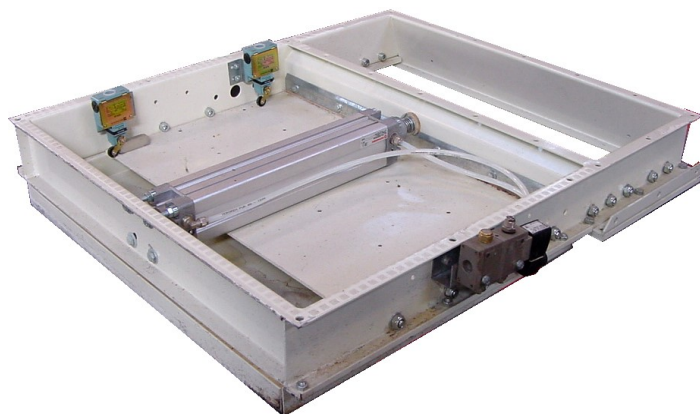
OUTLET SHUTTERS

Pneumatic outlet shutter seen from the bottom, please note that the security shielding is dismantled.

Here you see the placing of the switches and the solenoid valve.

The solenoid is available in 24 – 220 volt AC or DC and control Impulse or On-Off type.

The shutters are also available in manual execution equipped with a hand- or chain wheel.



Measurements

	A-40	A-50	A-70	A-90	A-115	A-150	A-200
A	750	840	840	950	950	1135	1135



Brush gear:

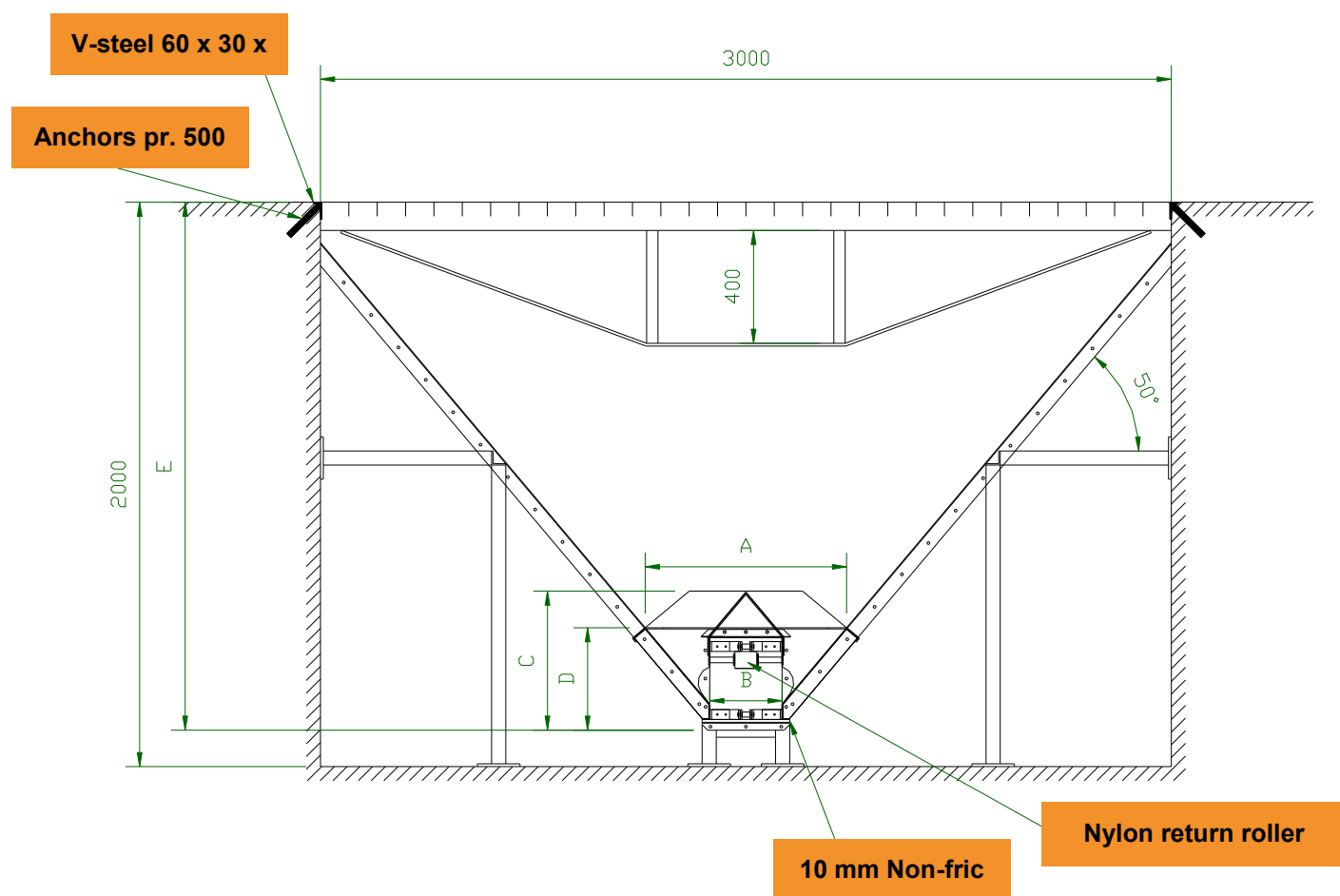
Brush gear is available as follows:

- » free hanging brush for easy running products.
- » pneumatic brush for heavy and difficult products.
- » Securing against mixing products.

INTAKE PIT

FM standard intake pit, with heavy grid

Intake pit in the shown type is used for all grain and free flowing material. When working with difficult products, such as fish meal, or similar, please look at our data sheet no. 03 – 07.



Type	A	B	C	D	E
A-40	659	205	463	362	1897
A-50	710	255	493	362	1871
A-70	843	255	575	444	1880
A-90	920	330	630	444	1833
A-115	1000	330	680	493	1835
A-150	1100	420	720	493	1766

INTAKE PIT

FFM standard side inlet sections and intake pit with grid

Standard side inlet for intake pit, used for grain and other free flowing products. For more difficult products, such as fish meal or similar products, we are using another system, please refer to our data sheet no. 03 – 07.

Side inlet sections, during assembly,
being prepared for delivery.

Capacity up to 700 ton/ hour.

The shown side inlet sections is designed with 50° slope.



Details in the end of the side inlet section, where the bracket for the top cover is seen, and the return roller as well.

When the top cover is placed over the return chain, the return chain is not in touch with the material flowing directly into the conveyor bottom.

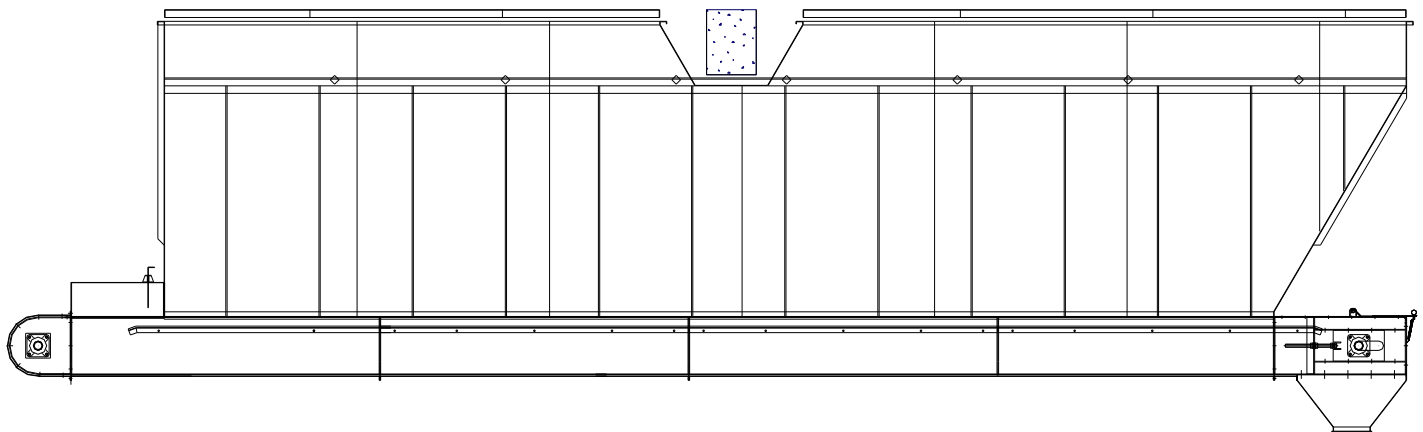


The intake pit itself is here being put on the side inlet sections. Everything is for easy bolt assembly.

For export, these intake pits will always be delivered CKD for bolting together on site.

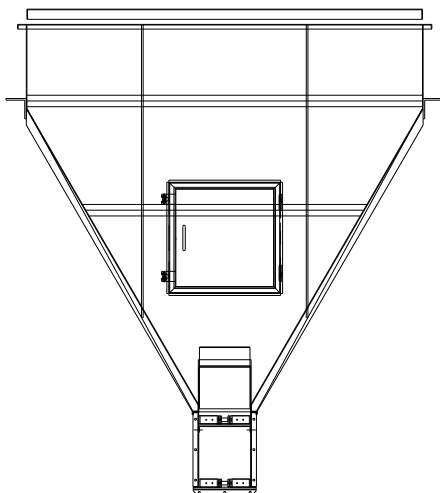
INTAKE PIT

FM Intake pit built on top of chain conveyor with intermediate bottom



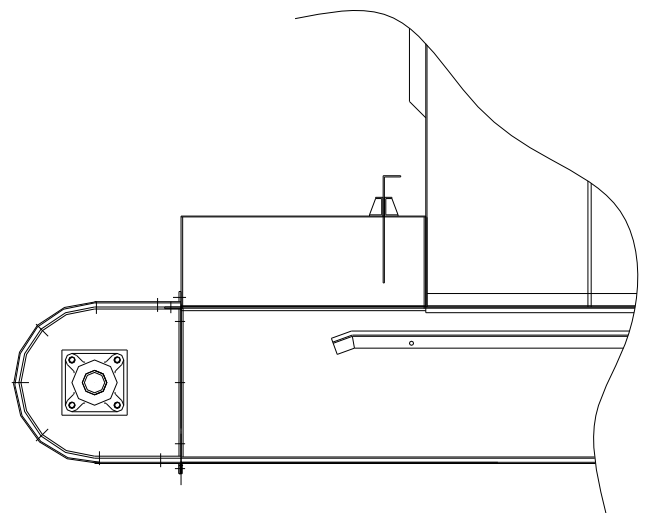
Bin scale built similar to the intake pit above. The intermediate bottom is in full length of the bin, and is avoiding the products to be bridging.

The conveyor is equipped with a manual shutter to control the capacity out of the scale bin. The chain conveyor is supplied with a round “turning end” instead of the standard tensioning section to avoid any build-up or mixing of products.



Intake pit, built on top of chain conveyor with intermediate bottom. The side wall of the intake pit is designed with a 60° slope and is very suitable for difficult products, such as meat and bone meal, fish meal and similar products that tend to bridging in the intake pit.

The intermediate bottom will always be equipped with 10 mm Nonfric.



The capacity shutter that is determining the actual capacity from the bin weight, is manual.

It is easily operated, securing full control over the capacity.

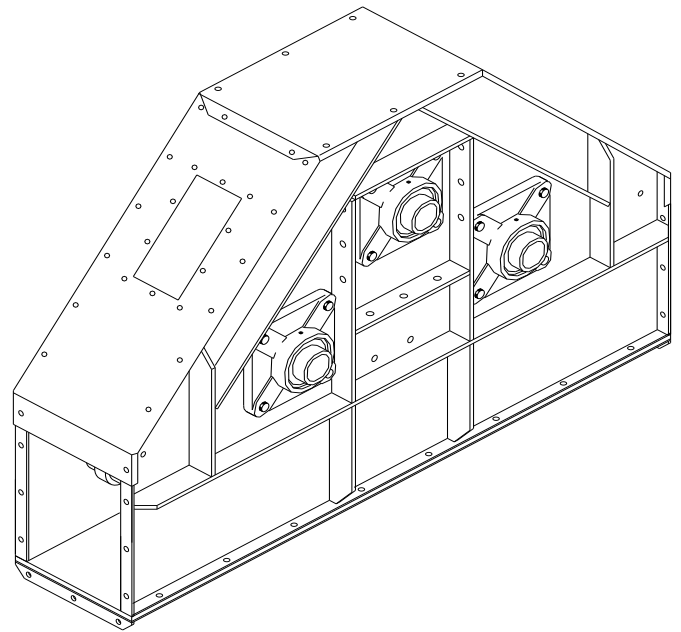
REVERSIBLE EXECUTION

Reversible drive terminal, for chain conveyors

Reversible drive terminal:

When using chain conveyors over a certain length for transporting goods in both directions we always put in a specially designed drive terminal.

- » Can be placed random on the conveyor.
- » Securing to keep the conveying chain tight in the conveying direction.



Reversible drive terminal ready for erection.

As this drive terminal is designed for putting on a hollow shaft gearbox it is equipped with two sets of torque arms.

Also available with bracket for putting on geared motor with flexible coupling.

The reversible drive terminal is due to its weight placed on top of a reinforcement point.

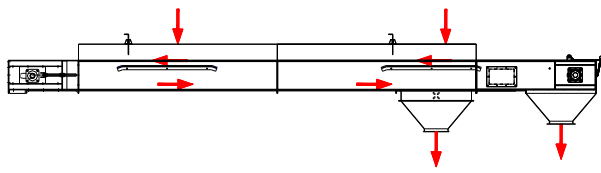
Can be delivered in hot dip galvanised and painted version depending on customer request.

We supply the reversible drive terminal to all the different types of our chain conveyors.

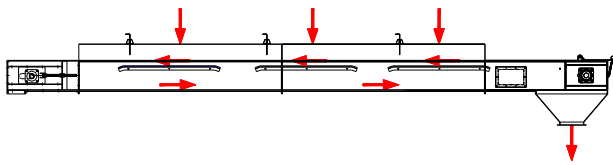
INTERMEDIATE BOTTOM

FM chain conveyors equipped with intermediate bottom

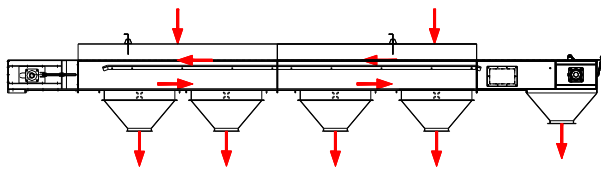
Here we present some of the solutions that is available for using the intermediate bottom in the chain conveyors, in combination with the outlet shutters.



This conveyor is equipped with two short intermediate bottoms, and one shutter placed under one of the intermediate bottom plates. You can control the feeding capacity into the conveyor, and deliver to two different places.



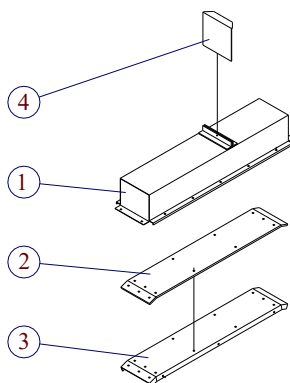
Three inlets with separate intermediate bottoms and shutters. Opens possibility to feed at the same time from a number of inlets.



One long intermediate bottom with a couple of intake places with shutters.

Here you can take from either to one or the other inlet and deliver in which outlet is needed without changing direction of rotation.

At the same time it is possible to regulate the capacity into the conveyor.



The parts for intermediate bottom and capacity shutters in the chain conveyors.

1. Raised lid.
2. Nonfric plate that is put on the intermediate bottom.
3. Steel intermediate bottom plate.
4. The manual regulation shutter for controlling the feeding into the conveyor.

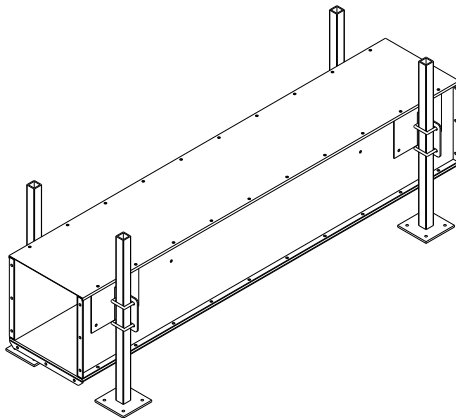
DETAILS



CHAIN CONVEYOR IN SELFSUPPORTING EXECUTION:

We also supply the intermediate sections for our chain conveyors in a special reinforced version, where they will be self supporting up to 20 meters.

That means when having conveyors connecting buildings, it will not be necessary to have any additional support structure if the distance is max. 20 meters.

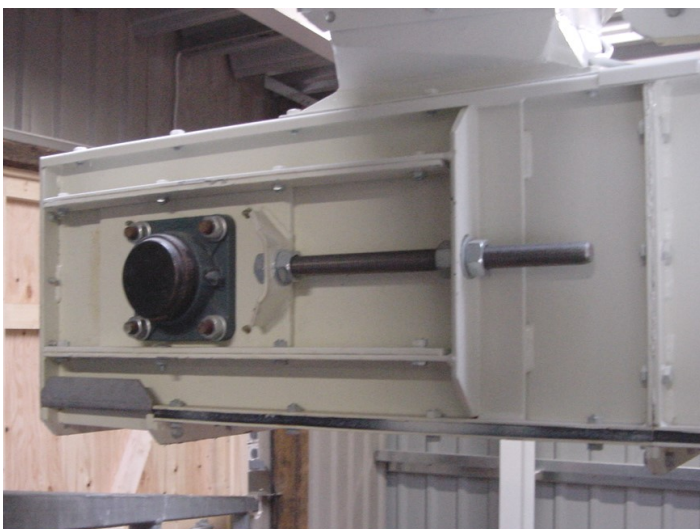


LEGS / SUPPORT FOR CHAIN CONVEYORS:

A very efficient solution for easy erection for chain conveyors.

This way of mounting ensures easy access to maintenance as the bottom plate can be dismantled without removing the support.

Is also easy height-adjustable, and suitable for hanging up the conveyors.



TENSION SECTION FOR CHAIN CONVEYORS:

For easy access to clean out the tensioning section of the chain conveyor it is equipped with a hand operated shutter where cleaning and inspection easily can be done.

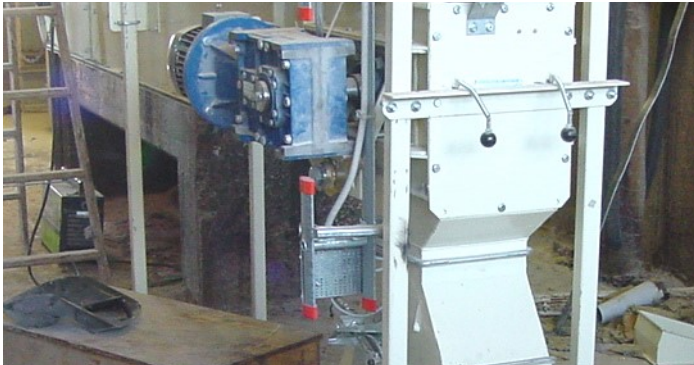
The tensioning section of the chain conveyor is heavily built with solid side walls with welded on reinforcements supporting the tensioning spindle.

Chain conveyor

Datasheet no. 03 – 11

TYPE A 40 S – A 800 S

FM Chain conveyor type A 40 S – A 800 S are specially designed for conveying feed stuff and similar products in production plants, where demands for cleanliness are essential

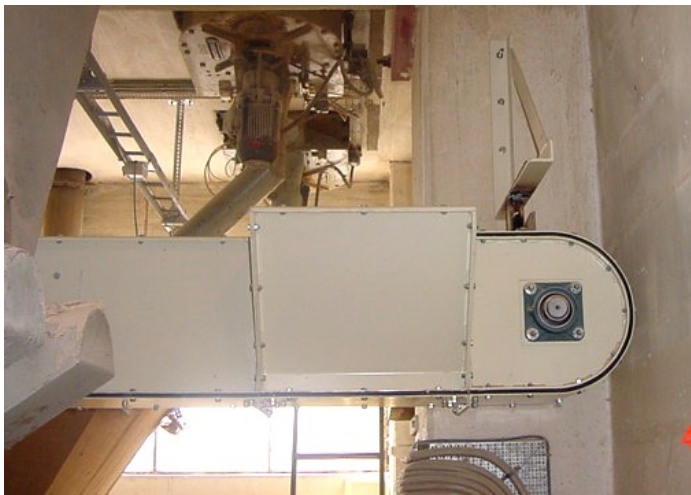


The FM chain conveyors type A 40 S – 800 S are generally built from the same main parts, as the standard chain conveyors.



The round return end of the chain conveyor is equipped with 10 mm Nonfric in the outer surface.

This design ensures that no goods can remain in the turning section.



The shown solution with the short side inlet is one of the standard accessories that is available for the standard chain conveyor, and also is suitable for the type A 40 S – A 800 S.

Contrary to the standard chain conveyor it is possible to feed the A 40 S – A 800 S in the turning end.



The combined tension and drive section is standard in the A 40 S to A 800 S chain conveyor.

This combined drive and tension section demands use of hollow shaft gearboxes as drive units for the “S” model conveyors.

