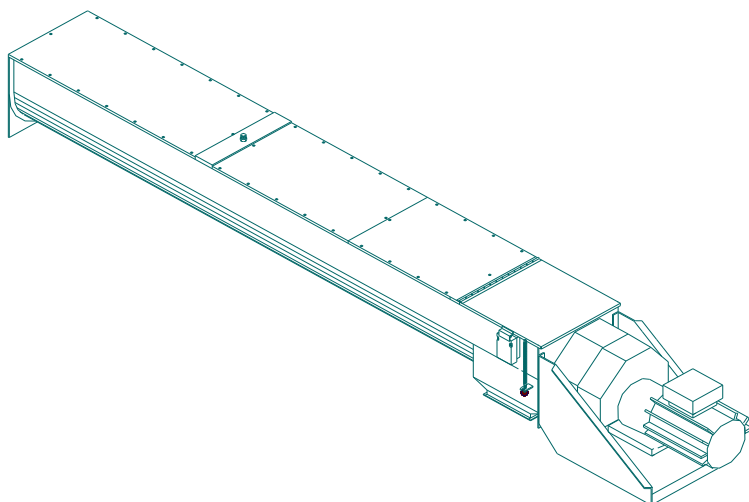


**FM Trough-shaped screw conveyors are designed for conveying and dosing of numerous different products – and are supplied in heavy industrial quality**



**Trough-shaped screw conveyor type B is standard supplied with intermediate bearings each 3 meters, and equipped with grease nipples.**

On request, and depending on products to be conveyed, the screw conveyors can be supplied with:

- » Heavy central tube shaft, avoiding use of intermediate bearings
- » Bearings mounted on heavy brackets outside the trough
- » Special shaft sealings, type Rotoglyd
- » Special intermediate bearings
- » Increased pitch on the screw
- » Right- or left hand screws

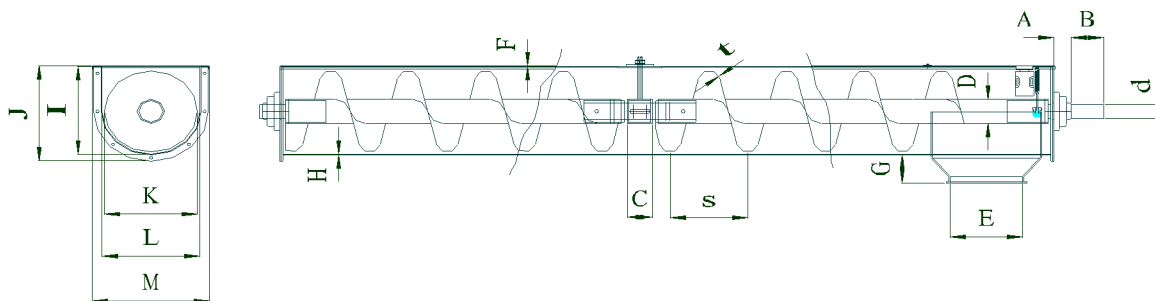
---

**Conveying capacity up to 250 m<sup>3</sup>/h.**

**We supply our screw conveyors in the following executions:**

- » Manufactured in St. 37 and painted in RAL 1013 (other colours on request)
- » Manufactured in St. 37 and hot dip galvanised – especially for erecting outside.
- » Manufactured in stainless steel type AISI 304.
- » Manufactured in stainless steel type AISI 316.

## TYPE B 125 – B 500 or larger according to customer requests

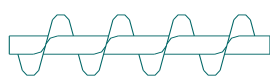


### Measurements – trough-shaped screw conveyors

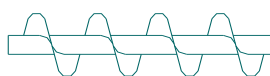
	B-125	B-150	B-160	B-200	B-250	B-300	B-350	B-400	B-450	B-500
A	51	55	55	55	55	55	55	83	83	83
B	105	105	105	105	105	105	105	105	105	105
C	80	80	80	80	80	80	80	80	80	80
D	1,5"	1,5"	1,5"	2"	2"	3"	3"	4"	4"	4
d	Ø40	Ø50	Ø50	Ø50	Ø50	Ø50	Ø50	Ø80	Ø80	Ø80
E	Q16	Q16	Q16	Q16/20	Q20/24	Q24/30	Q24/30	Q30/40	Q40	Q40
F	2	2	2	2	2	2	2	2	2	2
G	90	90	90	96	96	103	97	100	100	100
H	2	3	3	3	3	3	3	4	4	4
I	152	177	187	229	286	327	377	428	478	528
J	179	203	213	255	312	353	403	464	530	580
K	125	150	160	200	250	300	350	400	450	500
L	141	166	176	216	266	316	366	416	466	516
M	201	228	238	278	328	378	428	504	582	632
s	100	120	130	160	200	250	280	320	360	400
t	3	3	3	5	5	5	5	8	8	8

FM screw conveyors are supplied with right- or left hand screws.

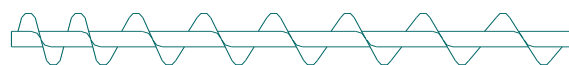
As standard the screw conveyors are supplied as right hand.



Left hand screw  
◀◀ conveying direction



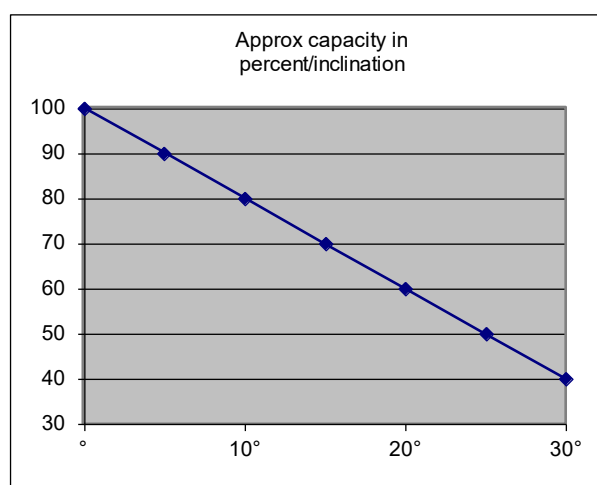
Right hand screw  
◀◀ conveying direction



Screw with increasing pitch

## TYPE B 125 – B 500 or larger according to customer requests

Products	Grain products		Flour products	
Type	Max. rpm.	M <sup>3</sup> /hour at 50% filling at max. rpm.	Max. rpm.	M <sup>3</sup> /hour at 40% filling and max. rpm.
B-125	320	9	175	5
B-150	320	19	160	7
B-160	320	23	150	8
B-200	240	31	120	12
B-250	190	55	95	22
B-300	160	80	80	32
B-350	160	131	80	52
B-400	140	158	70	63
B-450	130	195	65	78
B-500	115	249	60	103



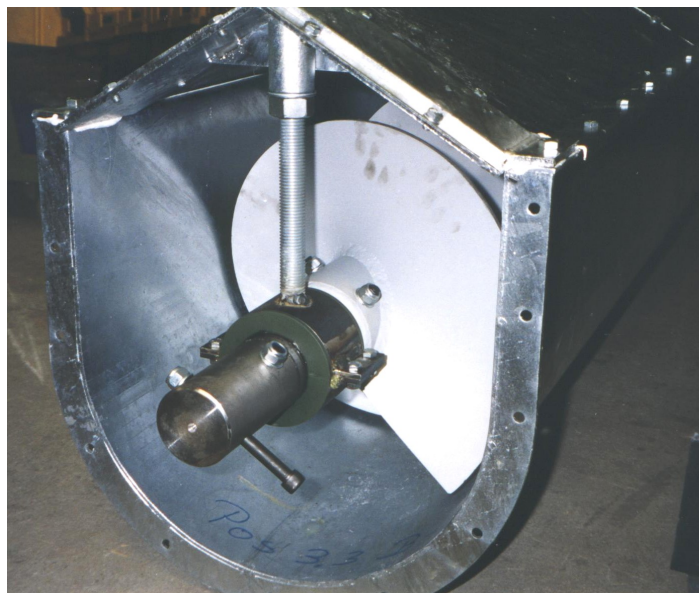
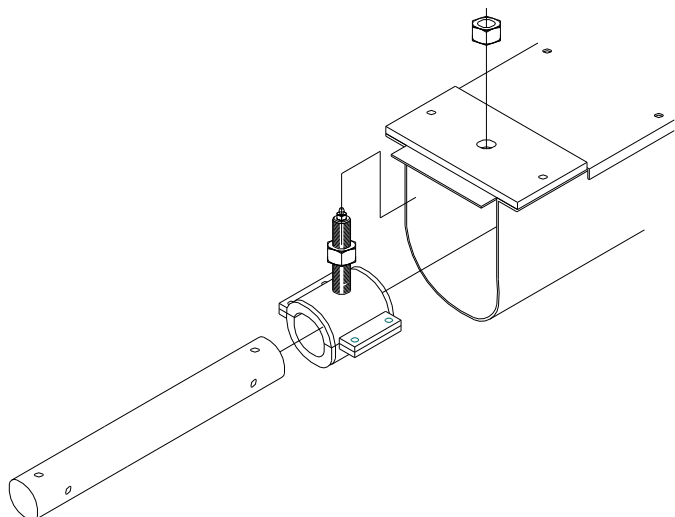
Capacity per rpm. based on 100% filling.	
Screw conveyor type:	m <sup>3</sup> /h per rpm.:
B 125	0,06
B 150	0,11
B 200	0,27
B 250	0,55
B 300	0,97
B 350	1,51
B 400	2,21
B 450	3,20
B 500	4,46

Effect calculation for horizontal screw conveyors:			
B-125 – B-300	KW =	1 x t/h x 2,4 D	1 = total length of conveyor t/h = ton capacity per hour D = screw diameter in mm
B-350 – B-400	KW =	1 x t/h x 2,8 D	
B-450 – B-500	KW =	1 x t/h x 3,5	

This calculation can not be used for calculating power consumption on dosing screws and special screws. Call us for calculation of power consumption for special screw conveyors.

## TYPE B 125 – B 500 or larger according to customer requests

### Overflow flap and ball bearings



The screw conveyor is normally equipped with OILON intermediate bearings each 3 meters. The intermediate bearings are supplied with grease nipples. Other types of intermediate bearings are supplied on request.



The screw conveyors are as standard always supplied with overflow hatch equipped with a safety switch, and security lock that only allows opening using tools.

This screw conveyor is equipped with the motor in inlet end.



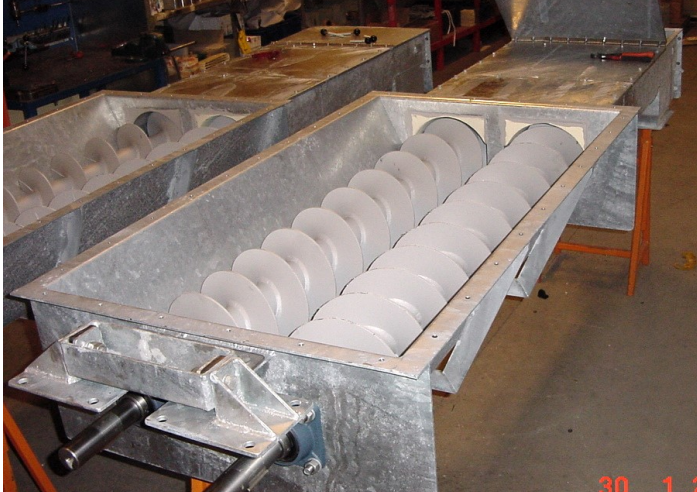
Often the screw conveyors are supplied with ROTOGLYD sealings.

Also we supply the screw conveyors with bracket mounted bearings, either flange bearings or pedestal bearings.





## DOSING SCREWS



The drive motors are here shown in the inlet end of the conveyor, but can also be placed in the outlet end if requested.

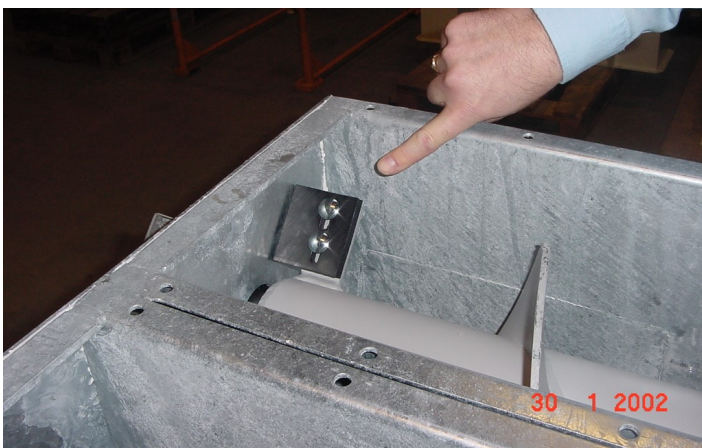
The double dosing screws are always supplied with overflow hatch in the outlet end.

It is also possible to put on speed guards.

Behind the safety guard grease nipples are admissible.



Dosing screws are primarily used for discharging / dosing difficult products, such as meat and bone meal, fish meal or similar difficult products from silos,



Nonfric scrapers are securing against old products sticking here.



For the dosing screws we normally use increasing pitch, and a stop "saddle" that secures control with the flow.

The use of increasing pitch are enabling complete control of the feeding capacity.

